

15/4/16 - 15/5/16

Drawing number / Rev
B1297000-PH2/3000.01a/0004 C4

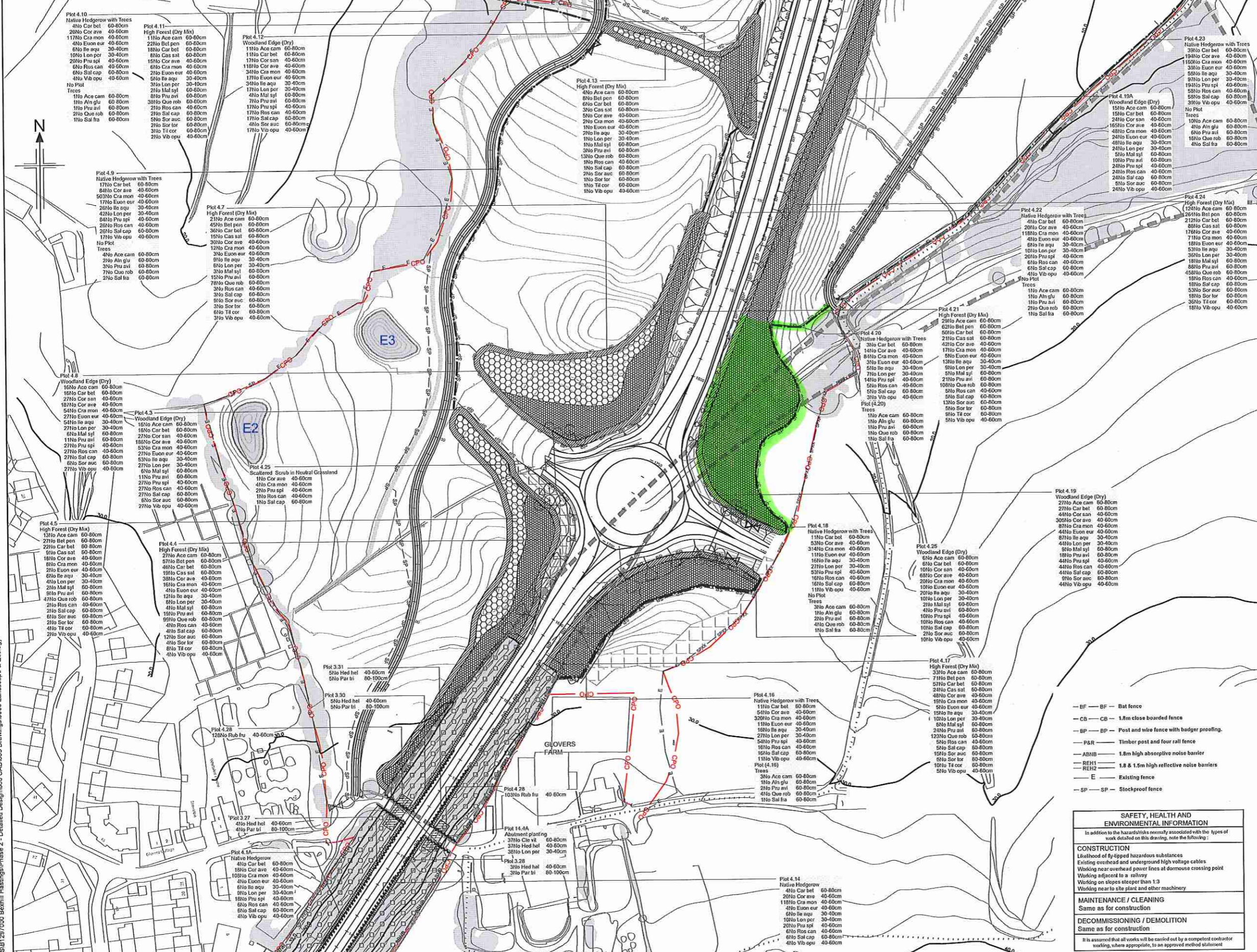
FOR CONTINUATION,
SEE DRAWING NO. 0005

NOTES

- All dimensions in metres unless otherwise stated.
- For complete fencing key, refer to fencing drawings.

KEY

- High Forest - Dry (Planting at 2m centres, random mix in groups of 3-5 of each species) (LE2.1 and LE2.4.1)
- High Forest - Dry (Planting at 2.5m centres, random mix in groups of 3-5 of each species) (LE2.1 and LE2.4.1)
- High Forest - Wet (Planting at 2m centres, random mix in groups of 3-5 of each species) (LE2.1 and LE2.4.1)
- High Forest - Wet (Planting at 2.5m centres, random mix in groups of 3-5 of each species) (LE2.1 and LE2.4.1)
- Dry Woodland Edge (3m wide, planting at approximately 1.2 - 1.5m centres in three staggered rows, random mix of 3-5 species (LE2.1 and LE2.4.1). Care must be taken not to plant in obvious or straight lines. Refer to planting detail on drawing B1297000/3000.01a/0001)
- Wet Woodland Edge (3m wide, planting at approximately 1.2 - 1.5m centres in three staggered rows, random mix of 3-5 species (LE2.1 and LE2.4.1). Care must be taken not to plant in obvious or straight lines. Refer to planting detail on drawing B1297000/3000.01a/0001)
- Scrub random mix in groups of 3 - 5 of each species (LE2.8)
- Wetland Scrub random mix in groups of 3 - 5 of each species (LE2.8)
- Existing Woodland to be managed (LE2.1.1)
- Existing Woodland Edge to be Managed (LE2.2)
- Scattered Trees in Wet Grassland, Marsh and Fen (LE6.4.1.1) Refer to Planting Detail on drawing B1297000/3000.01a/0001
- Scattered Scrub in Neutral Grassland (LE6.1.3.1) Refer to planting spacing detail on drawing B1297000/3000.01a/0001
- Climbing plants on fences and structures - 4m linear spacing unless otherwise noted.
- Woodland/woodland edge infill planting
- Amenity Tree and Shrub Planting (LE3.1)
- Extra heavy standard, semi-mature tree or multi-stem tree
- Site of Special Scientific Interest (SSSI)
- Site of Nature Conservation Importance (SNCI)
- Native Species Hedgerows (LE4.3) Two staggered rows, planted at 0.5m centres, 0.5m between rows.
- Native Hedgerows with Trees (LE4.4) Two staggered rows, planted at 0.5m centres, 0.5m between rows. Trees shall be planted between rows at an average of 10m - 15m centres. Each tree shall be marked identified with a pole as described in Appendix 30.6.1 Planting, Setting out, sub-section via in Revision 9 (or later) of the Series 3000 Appendices.
- Ditch
- Watercourse
- Pond
- Public Footpath
- Byway
- Bridleway
- Existing trees, hedges & scrub to be retained
- Woodland management zones
- CPO boundary
- Sloped slopes reinforced with soil nailing and hydrosed with grass



FOR CONTINUATION,
SEE DRAWING NO. 0003

Rev	Rev. Date	Purpose of revision	Drawn	Checked	Rev'd	App'd
C4	18/12/2015	Minor Planting Changes	LC	AS	AS	PDF
C3	04/11/2015	Planting rows to match scheme changes	AS	RM	RM	PDF
C2	11/03/2015	Plant Schedule Updated to Match Changes	CC	AS	TD	JP
C1	02/03/2015	NEBRG Roundabout	AS	RM	AB	JP
C0	28/07/2015	ISSUED FOR CONSTRUCTION	AS	RM	AB	JP

JACOBS
 Simpson House, 6 Cherry Orchard Road, Croydon, Surrey, CR9 6BE
 Tel: +44(0)208 682 8212 Fax: +44(0)208 681 2499
 www.jacobs.com

Client: HOCHTIEF
 Employer: TAYLOR WOODROW

Project: BEXHILL TO HASTINGS LINK ROAD

Drawing title: PLANTING SHEET 4 OF 14

Drawing status: FOR CONSTRUCTION

Scale: 1:1000 @ A1 DO NOT SCALE

Jacobs No. B1297000

Drawing number: B1297000-PH2/3000.01a/0004

Rev: C4

This drawing is not to be used in whole or part other than for the intended purpose and project as defined on this drawing. Refer to the contract for full terms and conditions.

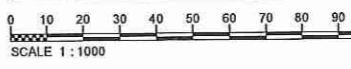
SAFETY, HEALTH AND ENVIRONMENTAL INFORMATION
 In addition to the hazards already mentioned with the types of work detailed on this drawing, note the following:

CONSTRUCTION
 Likelihood of fly-tipped hazardous substances
 Existing overhead and underground high voltage cables
 Working near overhead power lines at dormant crossing point
 Working adjacent to a railway
 Working on slopes steeper than 1:3
 Working near to site plant and other machinery

MAINTENANCE / CLEANING
 Same as for construction

DECOMMISSIONING / DEMOLITION
 Same as for construction

It is assumed that all works will be carried out by a competent contractor working, where appropriate, to an approved method statement



Drawing number / Rev
B1297000-PH2/3000.01a/0007 C4

Reproduction from the Ordnance Survey Map with the permission of the controller of Her Majesty's Stationery Office. Crown copyright reserved. Licence No. AL100017326

FOR CONTINUATION,
 SEE DRAWING NO. 0042

SAFETY, HEALTH AND ENVIRONMENTAL INFORMATION
 In addition to the usual safety, health and environmental information, the following applies to this drawing:
CONSTRUCTION
 Likelihood of fly-tipped hazardous substances
 Existing overhead and underground high voltage cables
 Working near overhead power lines at demolition crossing point
 Working adjacent to a railway
 Working on steep slopes greater than 1:3
 Working near to the plant and other machinery
MAINTENANCE / CLEANING
 Sarge as for construction
DECOMMISSIONING / DEMOLITION
 Same as for construction
 It is assumed that all works will be carried out by a competent contractor working, where appropriate, to an approved method statement

NOTES
 1. All dimensions in metres unless otherwise stated.
 2. For complete fencing key, refer to fencing drawings.

- KEY**
- High Forest - Dry (Planting at 2m centres, random mix in groups of 3-5 of each species) (LE2.1 and LE2.4.1)
 - High Forest - Wet (Planting at 2m centres, random mix in groups of 3-5 of each species) (LE2.1 and LE2.4.1)
 - Dry Woodland Edge (2m wide, planting at approximately 1.2 - 1.5m centres in three staggered rows, random mix of 3-5 species (LE2.1 and LE2.4.1). Care must be taken not to plant in obvious or straight lines. Refer to plant spacing detail on drawing B1297000/3000.01a/0001)
 - Wet Woodland Edge (2m wide, planting at approximately 1.2 - 1.5m centres in three staggered rows, random mix of 3-5 species (LE2.1 and LE2.4.1). Care must be taken not to plant in obvious or straight lines. Refer to plant spacing detail on drawing B1297000/3000.01a/0001)
 - Scrub random mix in groups of 3-5 of each species (LE2.8)
 - Existing Woodland to be managed (LE2.1)
 - Existing Woodland Edge to be Managed (LE2.2)
 - Scattered Trees in Wet Grassland, Marsh and Fen (LE6.1.1). Refer to plant spacing detail on drawing B1297000/3000.01a/0001)
 - Scattered Scrub in Neutral Grassland (LE6.1.3.1). Refer to plant spacing detail on drawing B1297000/3000.01a/0001)
 - Climbing plants on fences and structures - 4m linear spacing unless otherwise noted.
 - Woodland/woodland edge in-fill planting
 - Amenity Tree and Shrub Planting (LE3.1)
 - Extra heavy standard, semi-mature tree or multi-stem tree
 - Site of Special Scientific Interest (SSSI)
 - Site of Nature Conservation Importance (SNCI)
 - Native Species Hedgerows (LE4.3) Two staggered rows, planted at 0.5m centres, 0.5m between rows
 - Native Hedgerows with Trees (LE4.4) Two staggered rows, planted at 0.5m centres, 0.5m between rows. Trees shall be planted between rows at an average of 10m - 15m centres. Each tree shall be marked/identified with a pole as described in Appendix 30.8.1 Planting. See also, sub-section vii in Revision 9 (or later) of the Series 3000 Appendices.
 - Ditch
 - Watercourse
 - Pond
 - Public Footpath
 - Byway
 - Bridleway
 - Existing trees, hedges & scrub to be retained
 - Woodland management zones
 - CPO boundary
 - BF - BF - 1.8m close boarded fence
 - BP - BP - Post and wire fence with badge proofing.
 - P&R - Timber post and four rail fence
 - ABNB - 1.8m high absorptive noise barrier
 - REH1 - 1.8 & 1.5m high reflective noise barriers
 - REH0 - Existing fence
 - SP - SP - Stockproof fence

Rev	Rev. Date	Purpose of revision	Drawn	Checked	Rev'd	App'd
C4	18/12/2016	Minor Planting Changes	LC	AS	AS	PDF
C3	04/11/2015	Planting rows to match scheme changes	AS	RM	RM	FCF
C2	11/03/2015	Plant Schedule Updated to Match Changes	CC	AS	TD	JP
C1	02/03/2015	Revisions to match scheme layout changes	AS	RM	AS	JP
C0	20/07/2013	ISSUED FOR CONSTRUCTION	AS	RM	RM	AS

JACOBS
 Simpson House, 6 Cherry Orchard Road, Coulsdon, Surrey, CR8 4BE
 Tel: 44(0)208 665 6212 Fax: 44(0)208 631 2499
 www.jacobs.com

Client:

Project: **BEXHILL TO HASTINGS LINK ROAD**

Drawing title: **PLANTING SHEET 7 OF 14**

Drawing status: **FOR CONSTRUCTION**

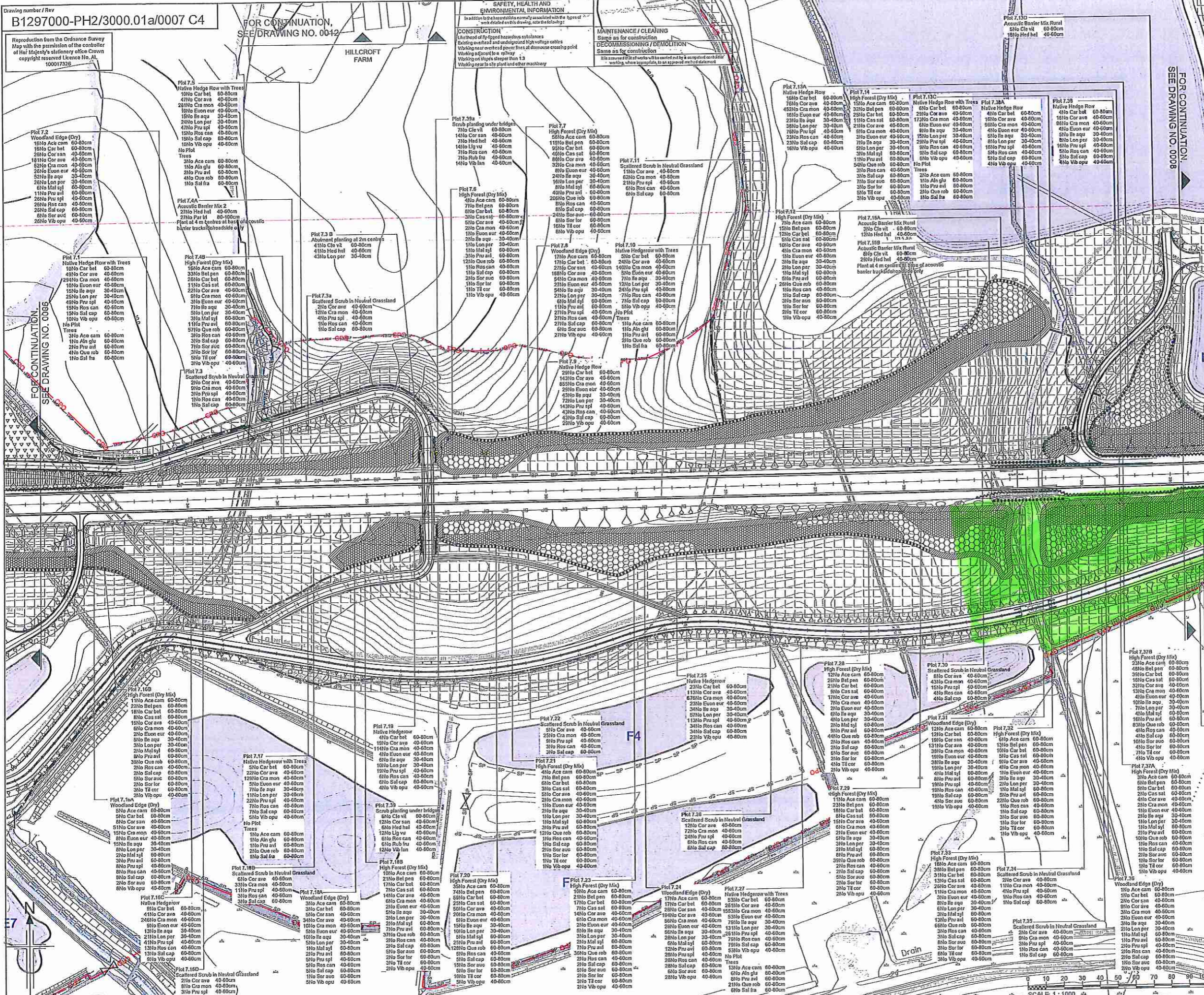
Scale: **1:1000 @ A1** **DO NOT SCALE**

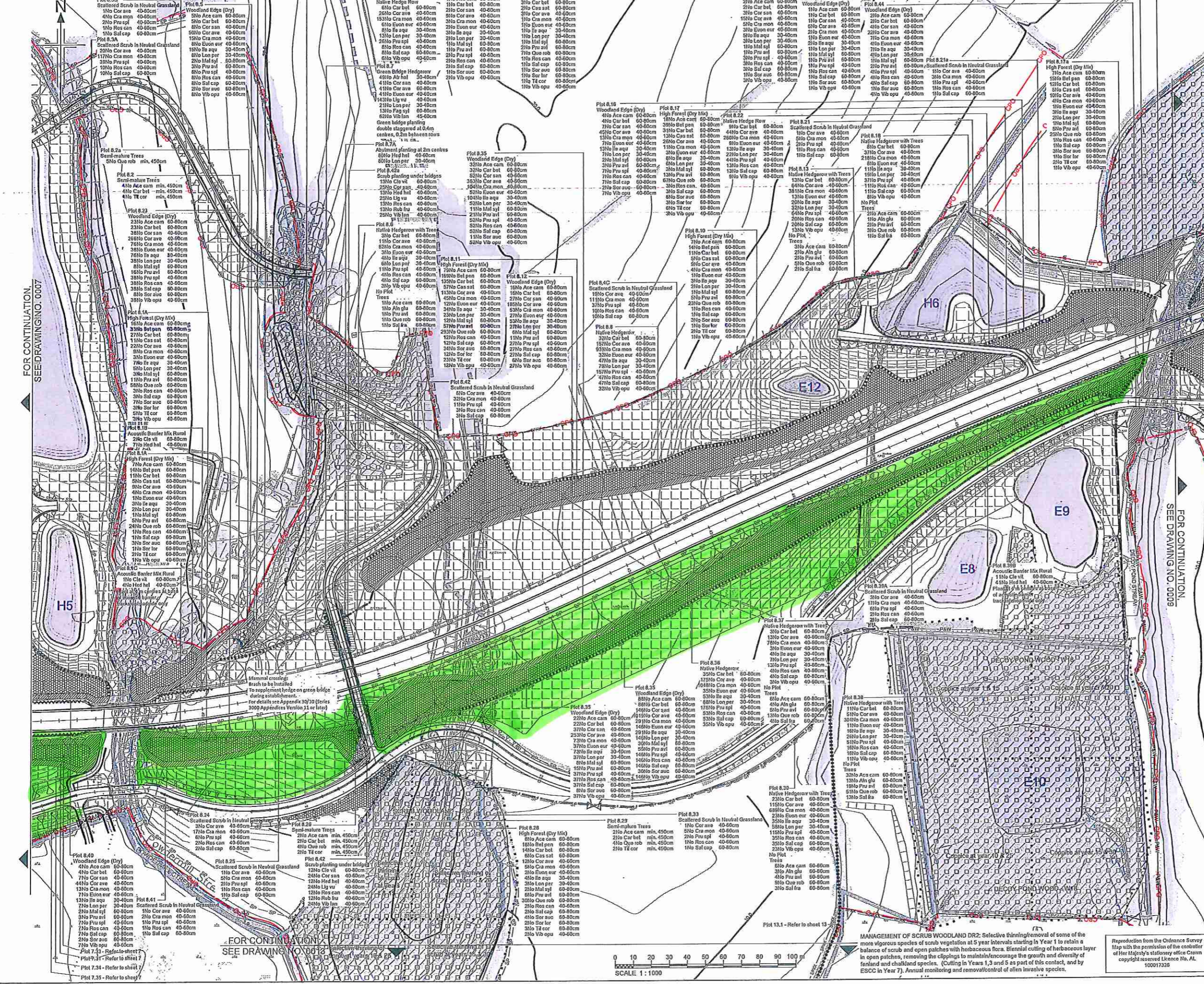
Jacobs No.: **B1297000**

Client ref.: **B1297000-PH2/3000.01a/0007**

Drawing number: **B1297000-PH2/3000.01a/0007** Rev **C4**

This drawing is not to be used in whole or part other than for the intended purpose and project as defined on this drawing. Refer to the contract for full terms and conditions.





NOTES
 1. All dimensions in metres unless otherwise stated.
 2. For complete fencing key, refer to fencing Drawings.

- KEY**
- High Forest - Dry (Planting at 2m centres, random mix in groups of 3-5 of each species) (LE2.1 and LE2.1.1)
 - High Forest - Dry (Planting at 2.5m centres, random mix in groups of 3-5 of each species) (LE2.1 and LE2.1.1)
 - High Forest - Wet (Planting at 2m centres, random mix in groups of 3-5 of each species) (LE2.1 and LE2.1.1)
 - High Forest - Wet (Planting at 2.5m centres, random mix in groups of 3-5 of each species) (LE2.1 and LE2.1.1)
 - Dry Woodland Edge (3m wide, planting at approximately 1.2 - 1.5m centres in three staggered rows, random mix of 3-5 species (LE2.1 and LE2.1.1). Care must be taken not to plant in obvious or straight lines. Refer to plant spacing detail on drawing B1297000/3000.01a/0001)
 - Wet Woodland Edge (3m wide, planting at approximately 1.2 - 1.5m centres in three staggered rows, random mix of 3-5 species (LE2.1 and LE2.1.1). Care must be taken not to plant in obvious or straight lines. Refer to plant spacing detail on drawing B1297000/3000.01a/0001)
 - Scrub random mix in groups of 3-5 of each species (LE2.8)
 - Wetland Scrub random mix in groups of 3-5 of each species (LE2.9)
 - Existing Woodland to be managed (LE2.1.1)
 - Existing Woodland Edge to be Managed (LE2.2)
 - Scattered Trees in Wet Grassland, Marsh and Fen (LE3.1.1) Refer to plant spacing detail on drawing B1297000/3000.01a/0001)
 - Scattered Trees in Neutral Grassland (E6.3.1.1) Refer to plant spacing detail on drawing B1297000/3000.01a/0001)
 - Climbing plants on fences and structures - 6m linear spacing unless otherwise stated)
 - Woodland woodland edge infill planting)
 - Anemly Tree and Shrub Planting (LE3.1)
 - Extra heavy standard, semi-mature tree or multi-stem tree)
 - Site of Special Scientific Interest (SSSI)
 - Site of Nature Conservation Importance (SNCI)
 - Native Species Hedgerows (LE4.3) Two staggered rows, planted at 0.5m centres, 0.5m between rows)
 - Native Species Hedgerows with Trees (LE4.4) Two staggered rows, planted at an average of 10m - 15m centres. Each tree shall be made identifiable with a pole as described in Appendix 30.1.1. Planting, starting out, and maintenance to be in accordance with the Series 3000 Appendices)
 - Ditch)
 - Watercourse)
 - Pond)
 - Public Footpath)
 - Byway)
 - Bridleway)
 - Existing trees, hedges & scrub to be retained)
 - Woodland management zones)
 - CPO boundary)

MANAGEMENT OF DECOY POND WOOD W18: Coppice or pollard half of willows around pond areas in Year 1 and the remainder in Year 5 prior to hand-over to ESCC management. A few of these trees could be left untouched in each operation to retain a variety of tree forms. Review and remove some of less desirable invasive species (such as goat willow) in Year 1 and Year 5 prior to hand-over to ESCC. Cyclical coppicing of hazels; a quarter in Year 1, a quarter in Year 5 and the remaining quarters in Years 10 and 15 under ESCC management as detailed in the OEMP. In Year 20 and 40 the coppicing cycle would begin again. Inspect areas of bracken to determine the benefit or otherwise of bracken control. If necessary carry out bracken control by agreed method in Years 1 & 5. Annually monitor and remove/control any alien invasive species. Monitor/control seedlings from mature sycamores in the adjacent Decoy Pond Sluice, in Years 1 & 5. Annually monitor English elms and Wych elms for Dutch Elm Disease. Investigate the need for further dredging in the existing pond.

Rev	Rev. Date	Purpose of revision	Drawn	Checked	Rev'd	Apprv'd
C4	18/12/2015	Minor Planting Changes	LO	AS	AM	RF
C3	04/12/2015	Planting trees to match scheme changes	AS	RM	AM	POF
C2	11/03/2015	Plant Schedule Updated to Match Changes	CC	AS	TD	JP
C1	02/03/2015	Rev to match minor scheme layout changes	RM	AS	AM	JP
C0	20/07/2013	ISSUE FOR CONSTRUCTION	AS	AM	RM	AB

JACOBS
 Kingston House, 6 Cherry Orchard Road, Crawley, Sussex, CR8 6BE
 Tel: +44 (0)203 658 2312 Fax: +44 (0)203 681 2499
 www.jacobs.com

Client: **HOCHTIEF** Employer: **TAYLOR WOODSON**

Project: **BEXHILL TO HASTINGS LINK ROAD**

Drawing title: **PLANTING SHEET 8 OF 14**

Drawing status: **FOR CONSTRUCTION**

Scale: **1:1000 @A1** **DO NOT SCALE**
 Jacobs No. **B1297000**
 Client no. **B1297000**

Drawing number: **B1297000-PH2/3000.01a/0008** Rev **C4**
 This drawing is not to be used in whole or part other than for the intended purpose and project as defined on this drawing. Refer to the contract for full terms and conditions.

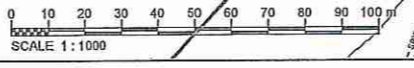
11 JAN 2016
 TNSS3

FOR CONTINUATION
 SEE DRAWING NO. 0007

FOR CONTINUATION
 SEE DRAWING NO. 0008

FOR CONTINUATION
 SEE DRAWING NO. 0012

FOR CONTINUATION
 SEE DRAWING NO. 0013



MANAGEMENT OF SCRUB WOODLAND DR2: Selective thinning/removal of some of the more vigorous species of scrub vegetation at 5 year intervals starting in Year 1 to retain a balance of scrub and open patches with herbaceous flora. Biennial cutting of herbaceous layer in open patches, removing the clippings to maintain/encourage the growth and diversity of fern and chalcid species. (Cutting in Years 1, 3 and 5 as part of this contact, and by ESCC in Year 7). Annual monitoring and removal/control of alien invasive species.

Reproduction from the Ordnance Survey Map with the permission of the controller of Her Majesty's Stationery Office Crown copyright reserved Licence No. AL 100017320